

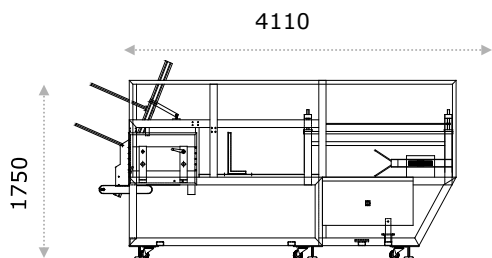
CASE PACKER

Model C1

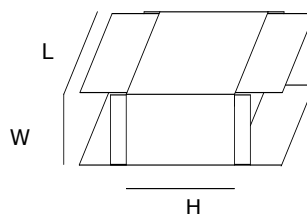


CASE PACKER

model C1



Width 1700 mm.
Exit height 860 mm.
Entrance height 740 mm.



Carton size

L = 230-470 mm.
W = 140-270 mm.
H = 155-350 mm.
Other sizes on demand

Case packer, model C1, seals pre-glued corrugated cardboard boxes with hot melt glue or tape. The machine has a simple construction so it is very easy to maintain. Therefore most standard components can be used.

Switchover time is reduced to a minimum when changing the packing composition, because all adjustments are made by means of counters and rulers.

Model C1 has a capacity of up to 15 outer cartons per minute depending upon product and carton size. It is fitted with adjustable vibration absorbers and wheels for problem-free transport.

Model C1

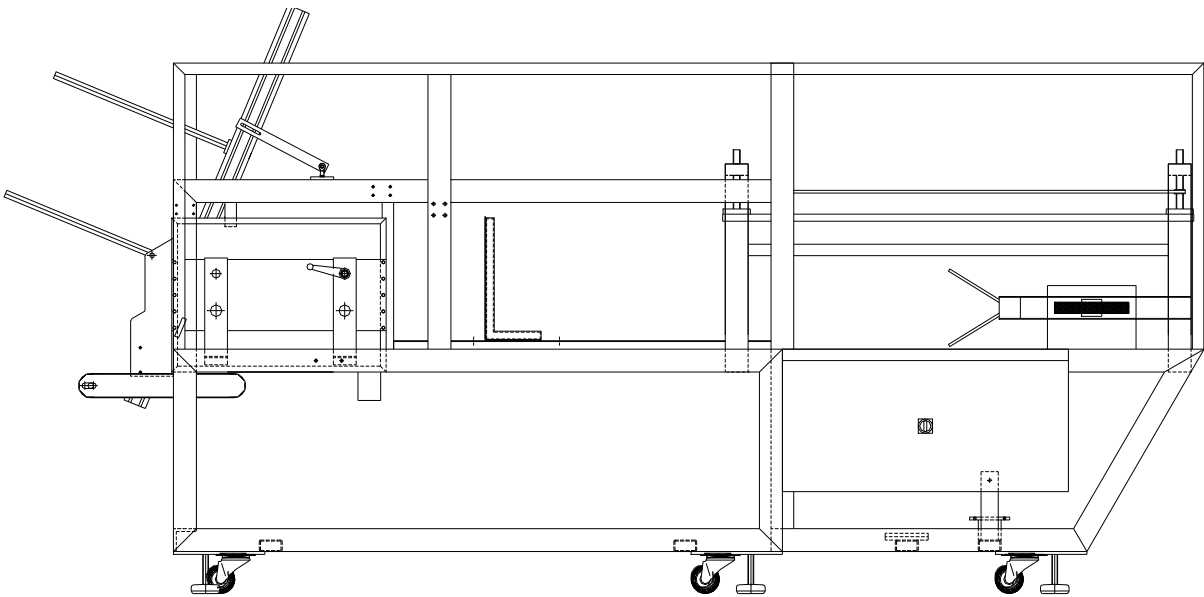
Constructed in stainless steel
Chainwheels are electro-plated
Pre-stretched black chains
1 adjustable magazine
Tape dispenser
Electricity supply: 3 x 400 VAC-N-PE, 3.5 kW
or as requested
Power consumption: 1.59 kWh at 15 cartons
per minute and a room temperature of 20° C.

Optional Extras

Embossing for date or codes
Spray glue system
Star wheel on exit
Chain and chainwheels in
stainless steel
Left-handed construction

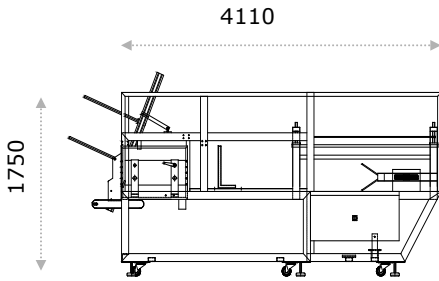
(We reserve the right to alter specifications without prior notice)
Aug. 2015

CASE PACKER model C1 W

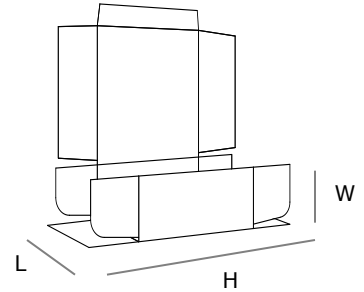
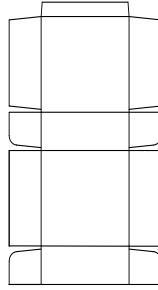


CASE PACKER

model C1 W



Width 1700 mm
Exit height 860 mm
Entrance height 740 mm



Carton size

L = 230-470 mm.
W = 140-270 mm.
H = 155-350 mm.
Other sizes on demand

Our case packer, model C1 W, seals corrugated cardboard boxes with hot melt glue or tape. The machine has a simple construction so it is very easy to maintain. Therefore most standard components can be used.

Switchover time is reduced to a minimum when changing the packing composition, because all adjustments are made by means of counters and rulers.

Model C1 W has a capacity of up to 15 outer cartons per minute depending upon product and carton size. It is fitted with adjustable vibration absorbers and wheels for problem-free transport.

Model C1 W

Constructed in stainless steel
Spray glue system
Chain wheels are electro-plated
Pre-stretched black chains
1 adjustable magazine
Electricity supply: 3 x 400 VAC-N-PE, 3.5 kW
or as requested
Power consumption: 1.59 kWh at 15 cartons
per minute and a room temperature of 20° C.

Optional Extras

Embossing for date or codes
Chain and chain wheels in
stainless steel
Left-handed construction

(We reserve the right to alter specifications without prior notice)
Aug. 2015